



MiTek[®]

Posi[™]-Joist Posi[™]-Rafter

THE METAL WEB JOIST AND RAFTER SYSTEM

Posi-Joist™

THE METAL WEB JOIST SYSTEM

STRENGTH

Posi-Joist combines the lightness of timber with the strength of the Posi-Strut steel web, allowing you to span far greater distances than would be possible with alternative timber products.

This gives you unequalled design freedom across a wide range of applications for both floors and roofs in domestic, industrial and commercial applications. Posi-Joist allows a variety of internal room layouts within an external shell due to its clear spanning capabilities.



SIMPLICITY

Easy access for the installation and maintenance of the services in the floor zone is the clear advantage of the Posi-Joist system, and with the ever increasing need for MVHR (Mechanical Ventilation and Heat Recovery) systems, Posi-Joist provides a perfect and simple solution that just isn't possible with alternative solid timber products.

The open web construction allows for services and utilities to be easily routed through the joists with no need for cutting or drilling or battening out.

KEY BENEFITS


- **Longer Spans** allow design freedom
- **Open Web design** creates a service void for ease of access
- **Lightweight Construction** means joists are easy to handle
- **Factory Manufactured** ensures a quality product, delivered made to measure
- **Wide Fixing Surface** makes fixing of floor deck and ceilings simple and minimises shrinkage
- **Acoustic Performance** exceptional sound performance to comply with UK & Irish regulations
- **Fire Performance** fully compliant with BS and EN fire standards
- **A wide range of end details** provide flexibility and can eliminate the need for expensive hangers and metalwork

Posi-Joist can be specified in a wide range of depths and specifications:

Web Type	Clearance between flanges	Standard Depth
PS8	108mm	202mm
PS9	131mm	225mm
PS10	159mm	253mm
PS12	210mm	304mm
PS14	279mm	373mm
PS16	327mm	421mm



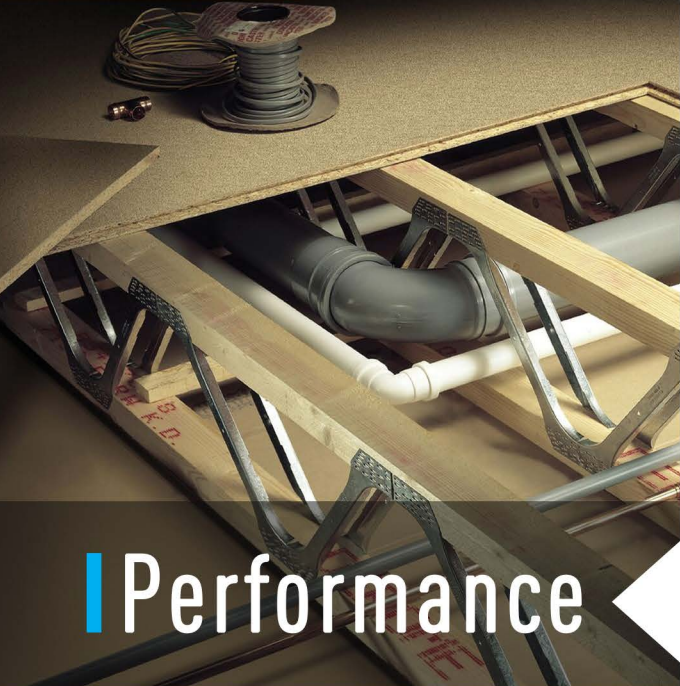
You simply can't afford to ignore the advantages of the **Posi-Joist system**.



Whilst an initial linear metre cost comparison with solid joist alternatives may suggest otherwise, Posi-Joist's ability to span greater distances than its timber competitors, coupled with its open web design gives the contractor several important cost saving advantages. The installation of services and utilities is far simpler and quicker with Posi-Joists, reducing both labour costs and build-up time on site.

Joists are manufactured in a controlled offsite environment ensuring a quality product, and are delivered 'made to measure' allowing for speedy erection. The job's done far more quickly and the contractor makes worthwhile savings.

What's more, Posi-Joists will often eliminate the need for load-bearing intermediate walls, dramatically cutting overall building costs.




Exceptional floor performance from a wide fixing surface makes flooring easy, controls shrinkage and with precision engineering it all reduces those tiresome return visits and remedial work.

Posi-Joist delivers outstanding acoustic performance, easily passing the relevant regulations.

A comprehensive range of floor build ups have passed both BS and the more stringent EN standards for fire resistance, for both intermediate and separating floors.

For detailed technical documentation, or to check a span and see a range of suitable Posi-Joist specifications visit www.mitek.co.uk/products/Posi-Joists to use our interactive span tables.



Design versatility is inherent in the concept of the Posi-Joist. The depth, length and width can be adjusted to produce an enormous number of different specifications, each with clearly defined performance criteria.

In addition, Posi-Joist end details can be altered to give a variety of support conditions.

The Posi-Joist Trimmable End incorporates a solid timber block which can be engineered with up to 130mm allowance for trimming on site. Top Hung joists can eliminate the need for hangers, saving cost and time on site.

Posi™-Rafter

THE METAL WEB RAFTER SYSTEM

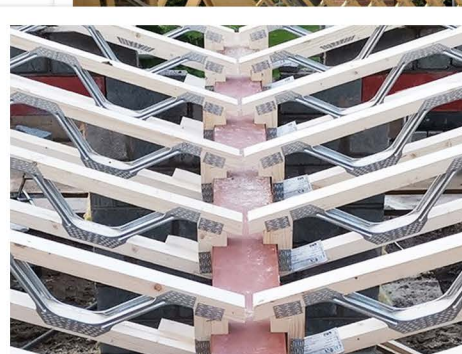
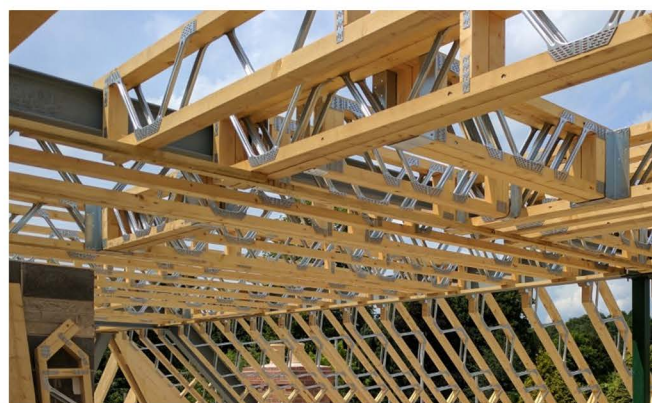
Posi-Strut webs are increasingly being incorporated into roof structures to take advantage of the many benefits on offer.

Posi-Rafters are parallel chord trusses, plated together with Posi-Strut metal webs. As with Posi-Joist floor joists they are designed and manufactured offsite and tailored to the requirements of each individual project. They arrive made to measure and accompanied by full layout drawings for speed of erection.

Posi-Rafters are suitable for both pitched roofs and flat roofs. They are stronger than solid timber rafters and so can span further and require less internal support.

A wide range of depths and end details provide great flexibility in their application, and the need for expensive hangers and metalwork can be eliminated through clever detailing and connections. The open web construction allows for services and utilities to be easily routed through the rafters with no need for cutting or drilling or battening out.

Posi-Rafters can also offer greater thermal U values than solid timber rafters.



MANUFACTURERS

With the largest network of licensed fabricators across the UK and Ireland, you are never too far from a Posi-Joist manufacturer.

All manufacturers use the very latest BIM compliant MiTek 3D Design and Engineering software and are able to provide clear and detailed drawings and interactive 3D models to be viewed on any device.

To find your nearest manufacturer visit www.mitek.co.uk/manufacturers



DOWNLOAD THE POSI TECHNICAL HANDBOOK

Including full fire and acoustic performance information, standard construction details and much more.

To download, and to find a manufacturer visit

www.mitek.co.uk

